

# FM Series Easy Loading Cutter

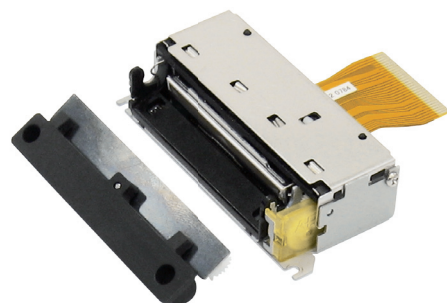
Thermal printer mechanism with Easy Loading Cutter

## Paper

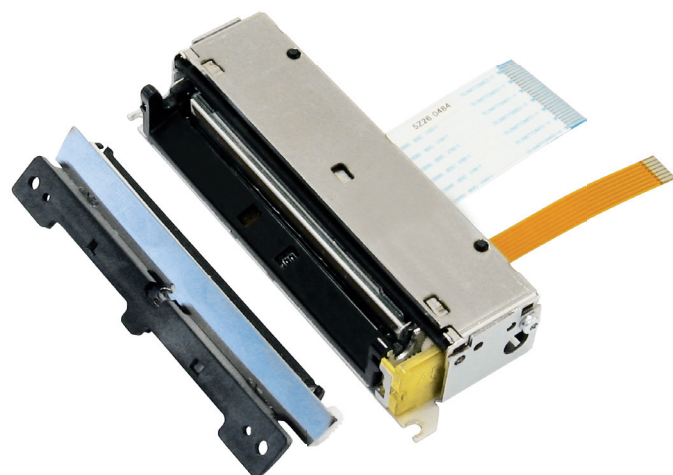


58 mm

80 mm



RoHS



New

## Features

- Easy loading cutter integrated
- Ultra compact design
- Ultra light
- High resolution printing (8 dots/mm)
- Low consumption
- Print speed up to 75 mm/s (FM205-ELC)
- Full electrostatic protection
- Max voltage 8.5 Volts
- Patented Easy Loading and Easy Door Opening System

## Applications

- Portable printers and terminals
- Hand held terminals
- Fiscal printers
- Calculators
- Measuring instruments and analysers
- POS (point of sale)
- Data terminal devices
- Medical equipments

## Specifications

	FM205-ELC	FM305-ELC
Printing method	Thermal	Thermal
Number of dots	384	576
Resolution (dots/mm)	8	8
Printing width (mm)	48	72
Paper width (mm)	58	80
Paper thickness (μ)	63 ± 5	63 ± 5
Paper weight (g/m <sup>2</sup> )	55 ± 4	55 ± 4
Paper loading	Easy loading	Easy loading
Printing speed max. (mm/s)	75	50
Paper detection	Photo Interrupter	Photo Interrupter
Temperature detection	Thermistor	Thermistor
Head-up or Cover-open detection	Combined with opto sensor	Combined with opto sensor
Voltage range (Logic/Head/Cutter)	3.0÷5.5 / 4.5÷8.5 / 5	3.0÷5.5 / 4÷8.5 / 5
Dot resistance (Ohm)	176 ± 4%	176 ± 4%
Energy per dot (mJ)	0.25	0.28
Stepper motor (Ohm)	Bipolar (12)	Bipolar (12)
Life/reliability	50km/100M Pulses	50km/100M Pulses
Operating temperature (C°)	0 to 50 non cond.	0 to 50 non cond.
Operating humidity	20 to 85 non cond.	20 to 85 non cond.
Weight (g.)	110	135
Dimensions (WxDxH mm max.) <small>(Main unit and fixed blade included, cable excluded)</small>	84x52x23	108x52x23
Cutter life (Kcuts)	> 250	> 250
Cutting method	Guillotine	Guillotine
Cutting type	Full and Partial	Full
Cutting time (ms)	~700 (@ 5v)	~700 (@ 5v)
Cutting pitch (mm) min.	10	10
Cutting frequency max. (cuts/min)	30	30
Cutter home position	by Mechanical Switch	by Mechanical Switch

## Options

### CSM05



### Chip set

